

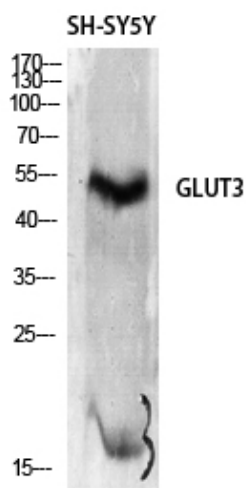


Glut3 Polyclonal Antibody

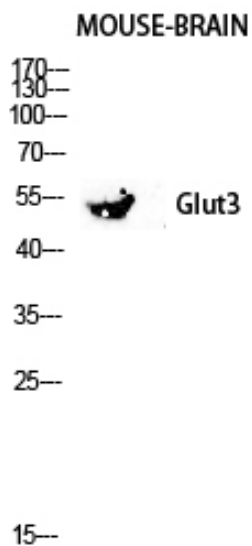
Catalog No	YP-Ab-00698
Isotype	IgG
Reactivity	Human;Rat;Mouse;
Applications	WB;IHC;IF;ELISA
Gene Name	SLC2A3
Protein Name	Solute carrier family 2 facilitated glucose transporter member 3
Immunogen	The antiserum was produced against synthesized peptide derived from human GLUT3. AA range:447-496
Specificity	Glut3 Polyclonal Antibody detects endogenous levels of Glut3 protein.
Formulation	Liquid in PBS containing 50% glycerol, 0.5% BSA and 0.02% sodium azide.
Source	Polyclonal, Rabbit,IgG
Purification	The antibody was affinity-purified from rabbit antiserum by affinity-chromatography using epitope-specific immunogen.
Dilution	WB: 1/500 - 1/2000. IHC: 1/100 - 1/300. ELISA: 1/10000.. IF 1:50-200
Concentration	1 mg/ml
Purity	≥90%
Storage Stability	-20°C/1 year
Synonyms	SLC2A3; GLUT3; Solute carrier family 2; facilitated glucose transporter member 3; Glucose transporter type 3, brain; GLUT-3
Observed Band	55kD
Cell Pathway	Cell membrane ; Multi-pass membrane protein . Perikaryon . Cell projection . Localized to densely spaced patches along neuronal processes. .
Tissue Specificity	Highly expressed in brain. Expressed in many tissues.
Function	function:Facilitative glucose transporter. Probably a neuronal glucose transporter.,similarity:Belongs to the major facilitator superfamily. Sugar transporter (TC 2.A.1.1) family. Glucose transporter subfamily.,tissue specificity:Highly expressed in brain. Expressed in many tissues.,
Background	function:Facilitative glucose transporter. Probably a neuronal glucose transporter.,similarity:Belongs to the major facilitator superfamily. Sugar transporter (TC 2.A.1.1) family. Glucose transporter subfamily.,tissue specificity:Highly expressed in brain. Expressed in many tissues.,
matters needing attention	Avoid repeated freezing and thawing!

**Usage suggestions**

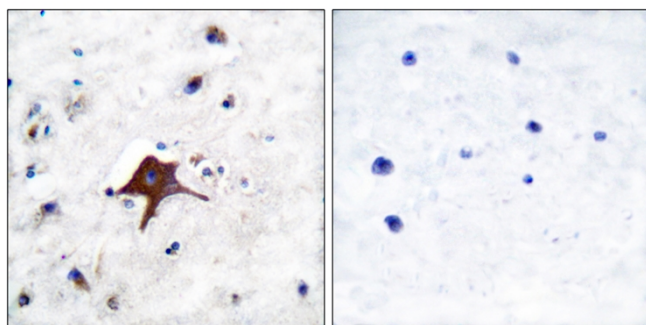
This product can be used in immunological reaction related experiments. For more information, please consult technical personnel.

Products Images

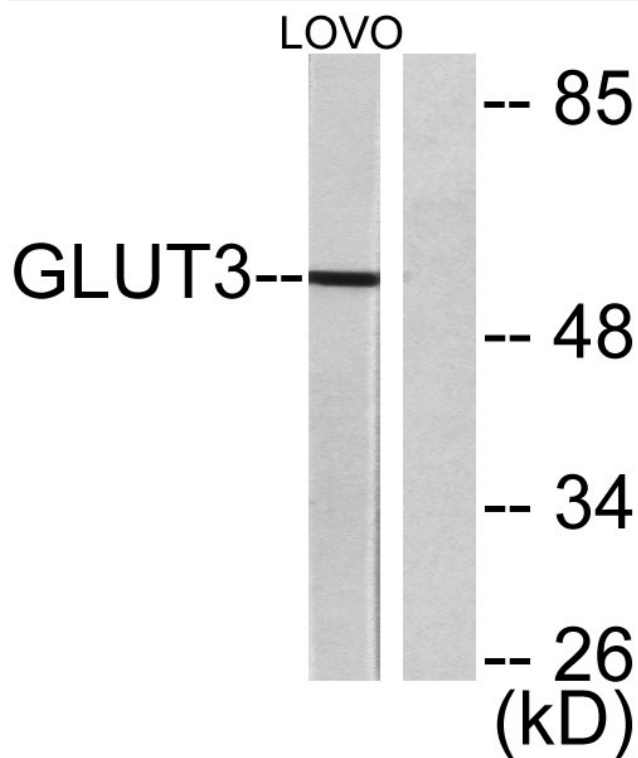
Western Blot analysis of SH-SY5Y cells using Glut3 Polyclonal Antibody diluted at 1:2000



Western blot analysis of Mouse-kidney lysis using Glut3 antibody. Antibody was diluted at 1:2000



Immunohistochemistry analysis of paraffin-embedded human brain tissue, using GLUT3 Antibody. The picture on the right is blocked with the synthesized peptide.



Western blot analysis of lysates from LOVO cells, using GLUT3 Antibody. The lane on the right is blocked with the synthesized peptide.